

FROM
YOUR
FIRST
IDEA

SHB-PACKAGING
Stolle Health and Beauty



TO
YOUR
BOTTLE
DESIGN

FROM YOUR FIRST IDEA



about
2 days



1.

**FIRST
SKETCHES**

about
2 days →



2.

**DIGITAL
VISUALIZATION**

about
10 days →



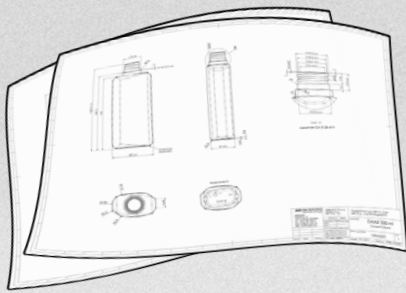
3.

**WOODEN
MOCK UP**

about
1 week

SIX STEPS TO TURN YOUR IDEA INTO REALITY

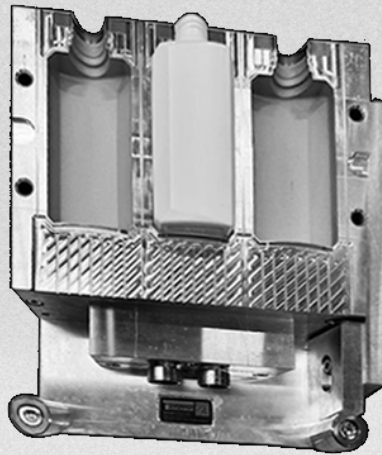
1. Idea and first sketches in about 2 days.
2. First sketches and digital mock up in 48 hours.
3. Digital mock up getting into a physical wooden model in 10 days.
4. Transforming wooden model into a technical drawing in about 1 week.
5. From the release of the technical drawing to the finished tool in 8 weeks.
6. Finished tool to production in about 2 weeks.



4.

→ **TECHNICAL
DRAWING**

about
8 weeks →



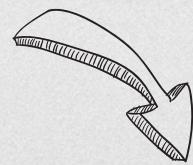
5.

**TOOL
MAKING**

about
2 weeks →



6.



**TO
YOUR
BOTTLE
DESIGN**

follow us



shb.packaging

